

**Richland County Recreation Commission  
Package C – Restrooms, Picnic Shelter, Racquetball Court Renovations**

**ADDENDUM NUMBER 2**

**Prepared by**

**M. B. Kahn Construction Co., Inc.  
Construction Management Division  
Columbia, SC**

**The Boudreaux Group  
Columbia, SC**

**Date of issue: July 21, 2010**

The following items take precedence over the referenced portion of the bidding documents for the above referenced project and in executing a contract shall become part thereof.

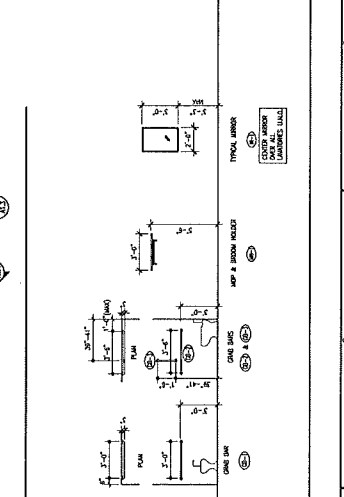
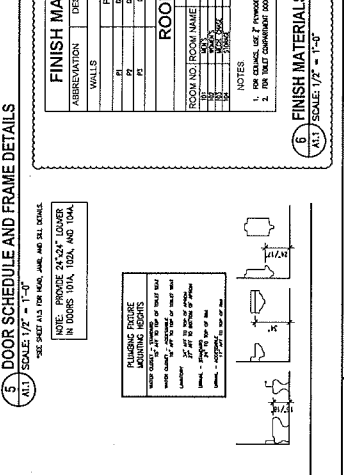
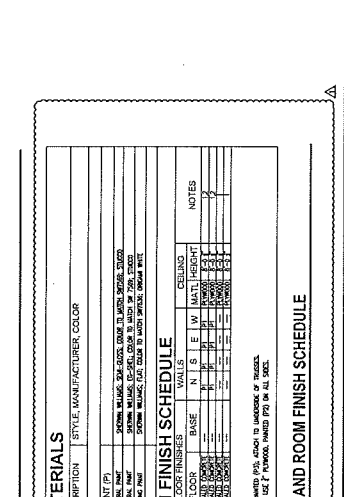
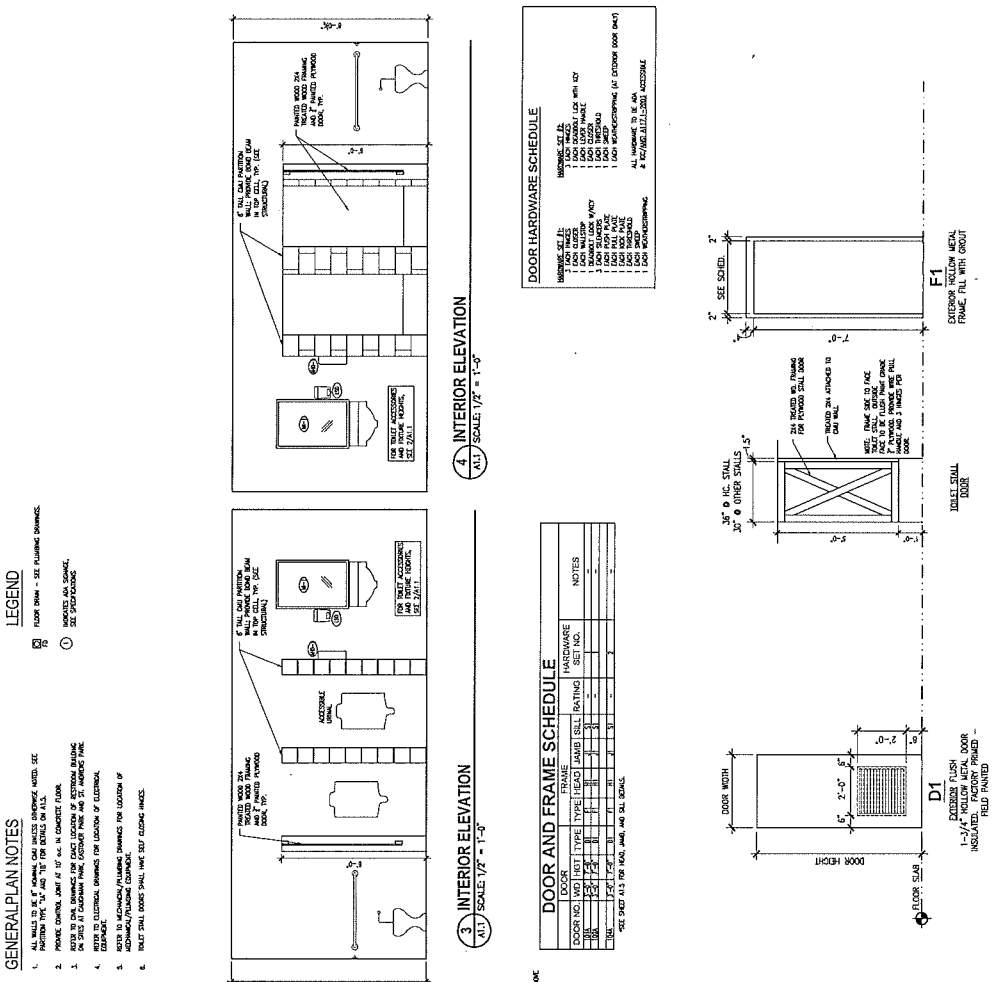
**ATTACHMENTS:**

**No. 1** Four (4) Drawings from The Boudreaux Group, Columbia, SC, dated July 20-21, 2010, consisting of the following

- A1.1 Floor Plan, Interior Details, & Door & Finish Schedules
- A1.3 Exterior Elevations, which takes precedence over the specifications.
  
- A3.2 Door Elevation, Details, Finish Schedule, Notes
- A3.3 Racquetball Courts Plan & Elevations

**End of Addendum No. 2**

**FLOOR PLAN, INTERIOR  
 FINISH SCHEDULES**



**DOOR AND FRAME SCHEDULE**

DOOR NO.	DOOR TYPE	HEAD (JAMB) RATING	SET NO.	NOTES
D1	1-1/2" MINIMUM CLEARANCE	INSULATED, FACTORY FINISH	RED FINISH	
D2	1-1/2" MINIMUM CLEARANCE	INSULATED, FACTORY FINISH	RED FINISH	
D3	1-1/2" MINIMUM CLEARANCE	INSULATED, FACTORY FINISH	RED FINISH	
D4	1-1/2" MINIMUM CLEARANCE	INSULATED, FACTORY FINISH	RED FINISH	
D5	1-1/2" MINIMUM CLEARANCE	INSULATED, FACTORY FINISH	RED FINISH	
D6	1-1/2" MINIMUM CLEARANCE	INSULATED, FACTORY FINISH	RED FINISH	
D7	1-1/2" MINIMUM CLEARANCE	INSULATED, FACTORY FINISH	RED FINISH	
D8	1-1/2" MINIMUM CLEARANCE	INSULATED, FACTORY FINISH	RED FINISH	
D9	1-1/2" MINIMUM CLEARANCE	INSULATED, FACTORY FINISH	RED FINISH	
D10	1-1/2" MINIMUM CLEARANCE	INSULATED, FACTORY FINISH	RED FINISH	
D11	1-1/2" MINIMUM CLEARANCE	INSULATED, FACTORY FINISH	RED FINISH	
D12	1-1/2" MINIMUM CLEARANCE	INSULATED, FACTORY FINISH	RED FINISH	
D13	1-1/2" MINIMUM CLEARANCE	INSULATED, FACTORY FINISH	RED FINISH	
D14	1-1/2" MINIMUM CLEARANCE	INSULATED, FACTORY FINISH	RED FINISH	
D15	1-1/2" MINIMUM CLEARANCE	INSULATED, FACTORY FINISH	RED FINISH	
D16	1-1/2" MINIMUM CLEARANCE	INSULATED, FACTORY FINISH	RED FINISH	
D17	1-1/2" MINIMUM CLEARANCE	INSULATED, FACTORY FINISH	RED FINISH	
D18	1-1/2" MINIMUM CLEARANCE	INSULATED, FACTORY FINISH	RED FINISH	
D19	1-1/2" MINIMUM CLEARANCE	INSULATED, FACTORY FINISH	RED FINISH	
D20	1-1/2" MINIMUM CLEARANCE	INSULATED, FACTORY FINISH	RED FINISH	
D21	1-1/2" MINIMUM CLEARANCE	INSULATED, FACTORY FINISH	RED FINISH	
D22	1-1/2" MINIMUM CLEARANCE	INSULATED, FACTORY FINISH	RED FINISH	
D23	1-1/2" MINIMUM CLEARANCE	INSULATED, FACTORY FINISH	RED FINISH	
D24	1-1/2" MINIMUM CLEARANCE	INSULATED, FACTORY FINISH	RED FINISH	
D25	1-1/2" MINIMUM CLEARANCE	INSULATED, FACTORY FINISH	RED FINISH	
D26	1-1/2" MINIMUM CLEARANCE	INSULATED, FACTORY FINISH	RED FINISH	
D27	1-1/2" MINIMUM CLEARANCE	INSULATED, FACTORY FINISH	RED FINISH	
D28	1-1/2" MINIMUM CLEARANCE	INSULATED, FACTORY FINISH	RED FINISH	
D29	1-1/2" MINIMUM CLEARANCE	INSULATED, FACTORY FINISH	RED FINISH	
D30	1-1/2" MINIMUM CLEARANCE	INSULATED, FACTORY FINISH	RED FINISH	

**ROOM FINISH SCHEDULE**

ROOM NO.	ROOM NAME	FLOOR	CASING	BASE	WALL	CEILING	NOTES
R1	TOILET						
R2	TOILET						
R3	TOILET						
R4	TOILET						
R5	TOILET						
R6	TOILET						
R7	TOILET						
R8	TOILET						
R9	TOILET						
R10	TOILET						
R11	TOILET						
R12	TOILET						
R13	TOILET						
R14	TOILET						
R15	TOILET						
R16	TOILET						
R17	TOILET						
R18	TOILET						
R19	TOILET						
R20	TOILET						
R21	TOILET						
R22	TOILET						
R23	TOILET						
R24	TOILET						
R25	TOILET						
R26	TOILET						
R27	TOILET						
R28	TOILET						
R29	TOILET						
R30	TOILET						

**FINISH MATERIALS**

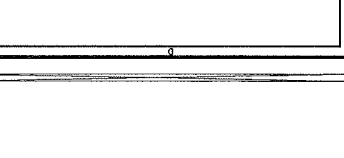
ABBREVIATION	DESCRIPTION	STYLE	MANUFACTURER	COLOR
F1	FLOOR FINISH			
W1	WALL FINISH			
C1	CASING FINISH			
B1	BASE FINISH			
CE1	CEILING FINISH			

**DOOR HARDWARE SCHEDULE**

HARDWARE NO.	TYPE	FINISH	NOTES
H1	DOOR HANDLE		
H2	DOOR HANDLE		
H3	DOOR HANDLE		
H4	DOOR HANDLE		
H5	DOOR HANDLE		
H6	DOOR HANDLE		
H7	DOOR HANDLE		
H8	DOOR HANDLE		
H9	DOOR HANDLE		
H10	DOOR HANDLE		
H11	DOOR HANDLE		
H12	DOOR HANDLE		
H13	DOOR HANDLE		
H14	DOOR HANDLE		
H15	DOOR HANDLE		
H16	DOOR HANDLE		
H17	DOOR HANDLE		
H18	DOOR HANDLE		
H19	DOOR HANDLE		
H20	DOOR HANDLE		
H21	DOOR HANDLE		
H22	DOOR HANDLE		
H23	DOOR HANDLE		
H24	DOOR HANDLE		
H25	DOOR HANDLE		
H26	DOOR HANDLE		
H27	DOOR HANDLE		
H28	DOOR HANDLE		
H29	DOOR HANDLE		
H30	DOOR HANDLE		

**FINISH MATERIALS AND ROOM FINISH SCHEDULE**

1. FOR COMBOS, USE F. FINISHES. PROVIDE FINISH AT WORKFACE OF BRICKS.  
 2. FOR TRIM, COMBINATION FINISHES, USE F. FINISHES. PROVIDE FINISH AT ALL SIZES.



**FINISH MATERIALS**

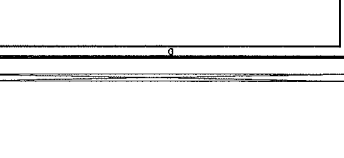
ABBREVIATION	DESCRIPTION	STYLE	MANUFACTURER	COLOR
F1	FLOOR FINISH			
W1	WALL FINISH			
C1	CASING FINISH			
B1	BASE FINISH			
CE1	CEILING FINISH			

**DOOR HARDWARE SCHEDULE**

HARDWARE NO.	TYPE	FINISH	NOTES
H1	DOOR HANDLE		
H2	DOOR HANDLE		
H3	DOOR HANDLE		
H4	DOOR HANDLE		
H5	DOOR HANDLE		
H6	DOOR HANDLE		
H7	DOOR HANDLE		
H8	DOOR HANDLE		
H9	DOOR HANDLE		
H10	DOOR HANDLE		
H11	DOOR HANDLE		
H12	DOOR HANDLE		
H13	DOOR HANDLE		
H14	DOOR HANDLE		
H15	DOOR HANDLE		
H16	DOOR HANDLE		
H17	DOOR HANDLE		
H18	DOOR HANDLE		
H19	DOOR HANDLE		
H20	DOOR HANDLE		
H21	DOOR HANDLE		
H22	DOOR HANDLE		
H23	DOOR HANDLE		
H24	DOOR HANDLE		
H25	DOOR HANDLE		
H26	DOOR HANDLE		
H27	DOOR HANDLE		
H28	DOOR HANDLE		
H29	DOOR HANDLE		
H30	DOOR HANDLE		

**FINISH MATERIALS AND ROOM FINISH SCHEDULE**

1. FOR COMBOS, USE F. FINISHES. PROVIDE FINISH AT WORKFACE OF BRICKS.  
 2. FOR TRIM, COMBINATION FINISHES, USE F. FINISHES. PROVIDE FINISH AT ALL SIZES.



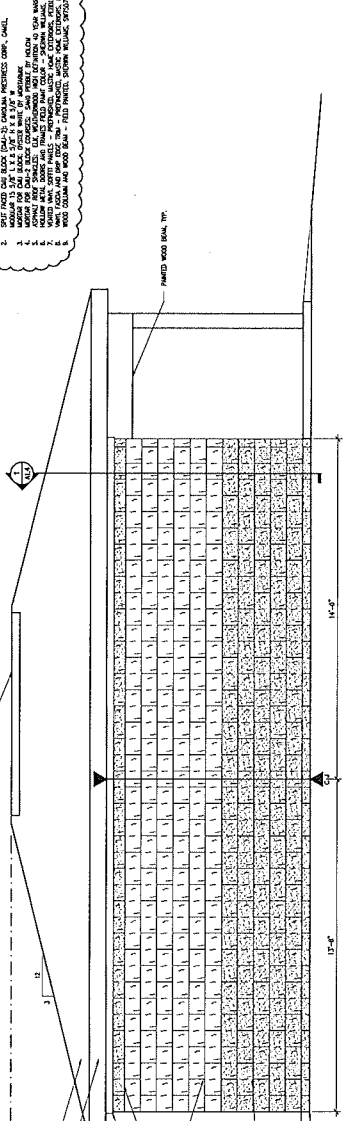
EXTERIOR ELEVATIONS

Project Title: RICHLAND COUNTY RECREATION COMMISSION RESTROOMS, PICNIC SHELTER, & RACQUET BALL CT.  
Client: RICHLAND COUNTY, SOUTH CAROLINA  
Location: COLUMBIA, SOUTH CAROLINA

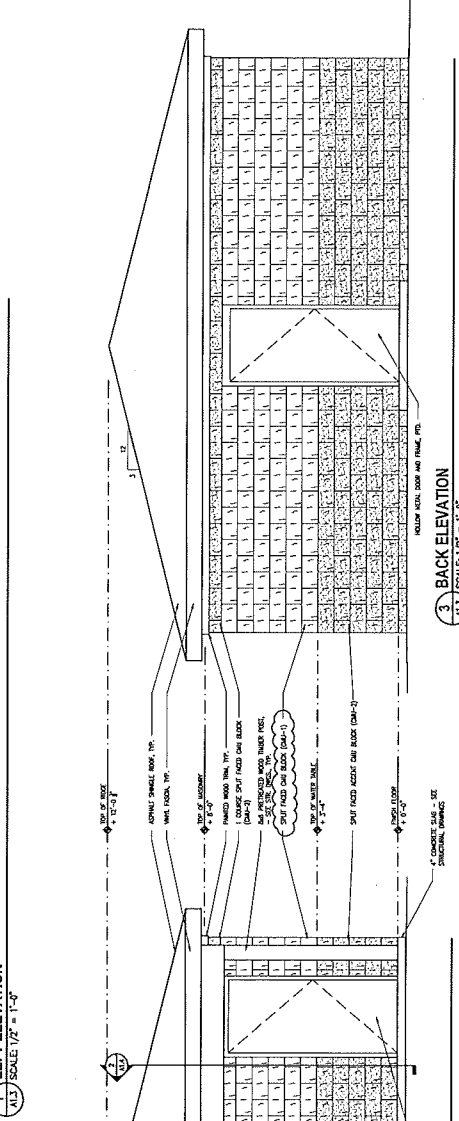
The Boudeaux Group  
Architectural Design  
1000 West Main Street  
Columbia, SC 29201  
(803) 799-1111  
www.boudeauxgroup.com

EXTERIOR FINISH NOTES

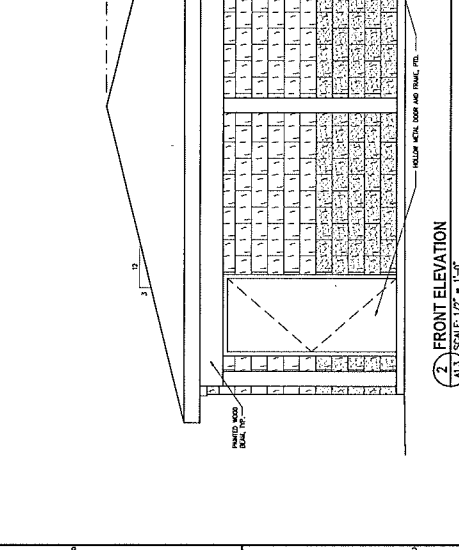
1. SHIP LAP ON ROOF (SH-1) COORDINATE WITH ARCHITECTURAL DRAWING.
2. SHIP LAP ON ROOF (SH-2) COORDINATE WITH ARCHITECTURAL DRAWING.
3. SHIP LAP ON ROOF (SH-3) COORDINATE WITH ARCHITECTURAL DRAWING.
4. SHIP LAP ON ROOF (SH-4) COORDINATE WITH ARCHITECTURAL DRAWING.
5. SHIP LAP ON ROOF (SH-5) COORDINATE WITH ARCHITECTURAL DRAWING.
6. SHIP LAP ON ROOF (SH-6) COORDINATE WITH ARCHITECTURAL DRAWING.
7. SHIP LAP ON ROOF (SH-7) COORDINATE WITH ARCHITECTURAL DRAWING.
8. SHIP LAP ON ROOF (SH-8) COORDINATE WITH ARCHITECTURAL DRAWING.
9. SHIP LAP ON ROOF (SH-9) COORDINATE WITH ARCHITECTURAL DRAWING.
10. SHIP LAP ON ROOF (SH-10) COORDINATE WITH ARCHITECTURAL DRAWING.



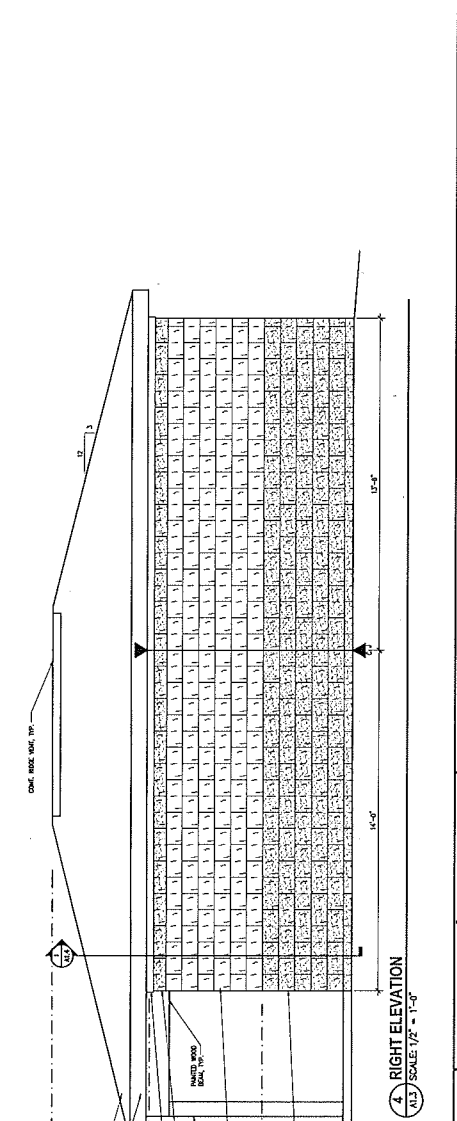
1 LEFT ELEVATION  
A1.3 SCALE: 1/2" = 1'-0"



3 BACK ELEVATION  
A1.3 SCALE: 1/2" = 1'-0"



2 FRONT ELEVATION  
A1.3 SCALE: 1/2" = 1'-0"

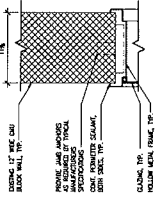


4 RIGHT ELEVATION  
A1.3 SCALE: 1/2" = 1'-0"

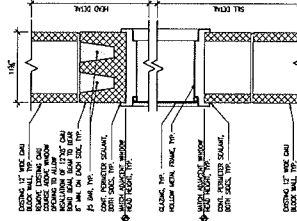
NOTE: IF NO COLOR FOR THE FINISH IS SELECTED, THE ARCHITECT RESERVES THE RIGHT TO SELECT COLOR FROM THE MANUFACTURER'S FULL RANGE OF STANDARD COLORS.

**FINISH SCHEDULE**

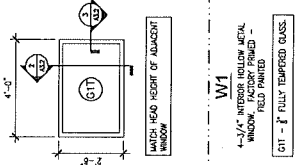
PT-1	WALLS	SHERWIN WILLIAMS; SW7688 SUNDEW
PT-2	WALLS	SHERWIN WILLIAMS; SW7641 COLLOMAD GRAY
PT-3	WALLS	SHERWIN WILLIAMS; SW7642 PAVESTONE
PT-4	WALLS	SHERWIN WILLIAMS; ALABASTER SW 7008
PT-5	WALLS	SHERWIN WILLIAMS; MATCH EXISTING
PT-6	FLOOR	SHERWIN WILLIAMS; MATCH EXISTING
FP-1	FLOOR	MPC INC; T.B.D. (from manuf. full range)
ATF-1.1	FLOOR	SPORT COURT RESPONSE HG; MAPLE
ATF-1.2	FLOOR	SPORT COURT RESPONSE HG; SILVER
ATF-2.1	FLOOR	INTERLOCKING RUBBER TILE FLOOR; T.B.D.
VCT-1	FLOOR	MATCH EXISTING
PT-6	FLOOR	SHERWIN WILLIAMS; SW7641 COLLOMAD GRAY
RB-1	WALL BASE	MATCH EXISTING
APC-1	ACOUSTICAL PANEL CEILING	MATCH EXISTING CEILING TILE



3. WINDOW JAMB DETAIL  
SCALE: 1-1/2" = 1'-0"



2. WINDOW HEADSILL DETAIL  
SCALE: 1-1/2" = 1'-0"



1. DOOR AND WINDOW ELEVATION  
SCALE: 1/2" = 1'-0"

**DOOR HARDWARE SCHEDULE**

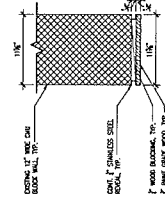
NOTE: ALL HARDWARE IS TO BE AS SHOWN UNLESS OTHERWISE INDICATED.

1. LOCK SYSTEM: **LOCKET**

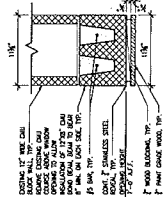
2. DOOR HANDLE: **DOOR HANDLE**

3. DOOR MANUFACTURER: **AT CROWN DOOR CO.**

4. ALL HARDWARE IS TO BE AS SHOWN UNLESS OTHERWISE INDICATED.



5. CASED OPENING JAMB DETAIL  
SCALE: 1-1/2" = 1'-0"



4. CASED OPENING HEAD DETAIL  
SCALE: 1-1/2" = 1'-0"

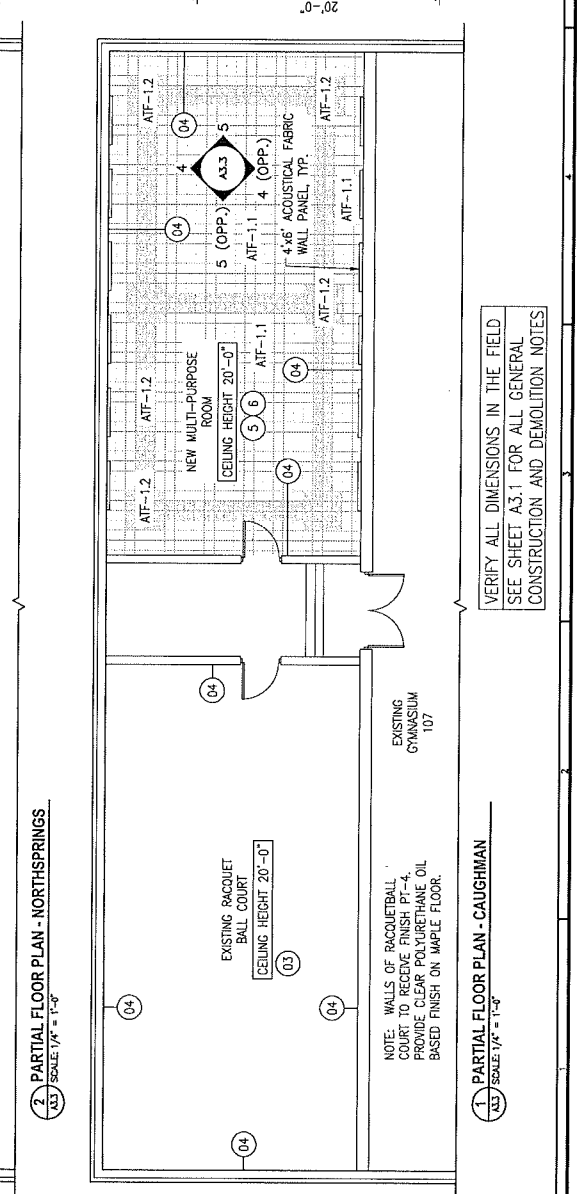
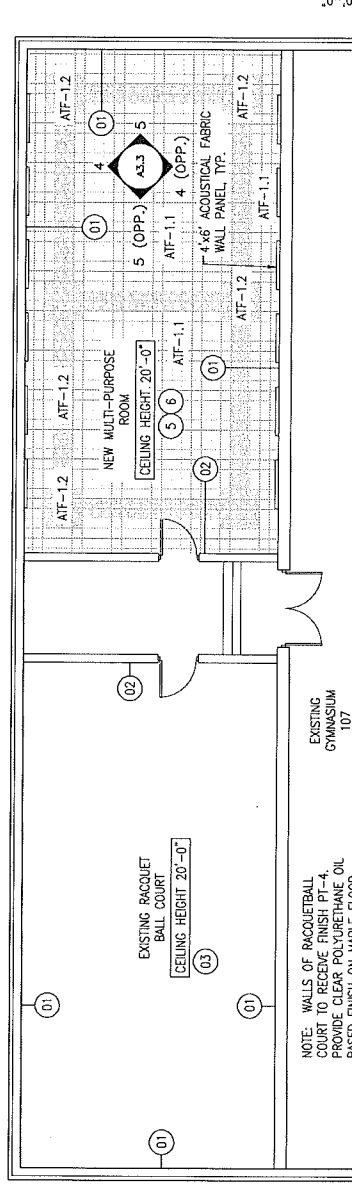
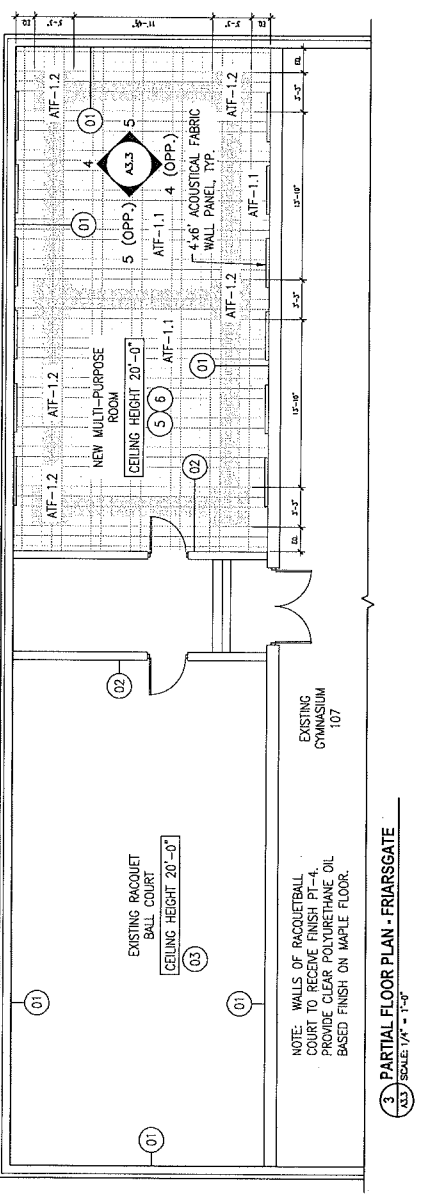
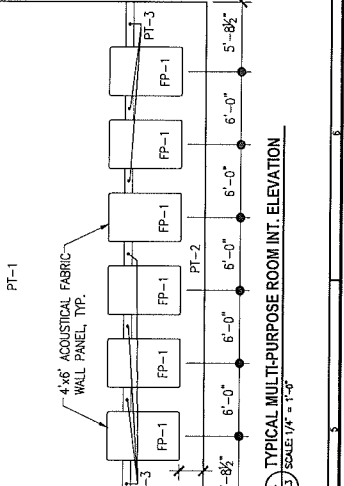
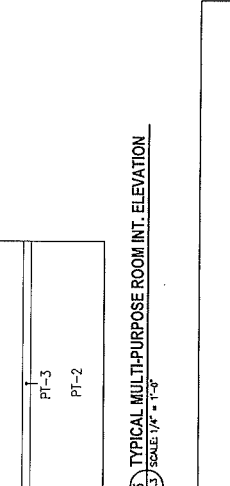
NO.	REVISION	DATE
1	FINISH REVISION	07/21/10
2	REVISED	07/21/10
3	REVISED	07/21/10
4	REVISED	07/21/10
5	REVISED	07/21/10
6	REVISED	07/21/10
7	REVISED	07/21/10
8	REVISED	07/21/10
9	REVISED	07/21/10
10	REVISED	07/21/10

- KEYNOTES:**
- RE-PANT EXISTING WALL PANELS.
  - RE-PANT EXISTING WALL PANELS. WALL HEIGHT IS 14'-0".
  - SAND AND RE-FINISH EXISTING WOOD FLOORING.
  - CONTRACTOR TO RE-PANT STRIPING ON FLOOR ACCORDING TO UNITED STATES RACQUETBALL ASSOCIATION GUIDELINES.
  - RE-PANT EXISTING STUCCO WALLS.
  - PROVIDE NEW ATHLETIC TILE FLOORING.
  - PROVIDE (12) 4"x6" ACOUSTICAL FABRIC WALL PANELS
  - 24" A.F.F. (FINISH IS FP-1)

- ALTERNATES:**
- ADD ALT. #1: REPLACE EXISTING ACOUSTICAL CEILING TILES WITH SIMILAR CEILING TILE. SUSPENDED GRID TO REMAIN. CONTRACTOR TO VISIT SITE TO DETERMINE SCOPE OF REPLACEMENT.

**FINISH SCHEDULE**

PT-1	WALLS	SHERWIN WILLIAMS; SW7588 SUNDEW
PT-2	WALLS	SHERWIN WILLIAMS; SW7641 COLLOMIDE GRAY
PT-3	WALLS	SHERWIN WILLIAMS; SW7542 PAVESTONE
PT-4	WALLS	SHERWIN WILLIAMS; AJABASTER SW 7008 T.B.D.
FP-1	FLOOR	MPC INC.; T.B.D. (FROM MANUF. FULL RANGE)
ATF-1.1	FLOOR	SPORT COURT RESPONSE HG; MAPLE
ATF-1.2	FLOOR	SPORT COURT RESPONSE HG; SILVER



VERIFY ALL DIMENSIONS IN THE FIELD  
 SEE SHEET A3.1 FOR ALL GENERAL  
 CONSTRUCTION AND DEMOLITION NOTES